



# Captiva

## Erosion Prevention District

### APPORTIONMENT MODEL MAP LIVE ON CEPD WEBSITE

CEPD Technical Policy Director, Daniel Munt, crafted an interactive map utilizing the ARCGIS system that displays the tentative apportionment model, under consideration by the CEPD Board, as would be assessed across Captiva properties.

The application has been embedded on the CEPD website so that all property owners may conveniently search for their estimated assessment.

The map can be found here:

<https://www.mycepd.com/map-of-the-apportionment-model>

**René Miville**

CHAIRMAN

**John Silvia**

VICE CHAIRMAN

**Harry Kaiser**

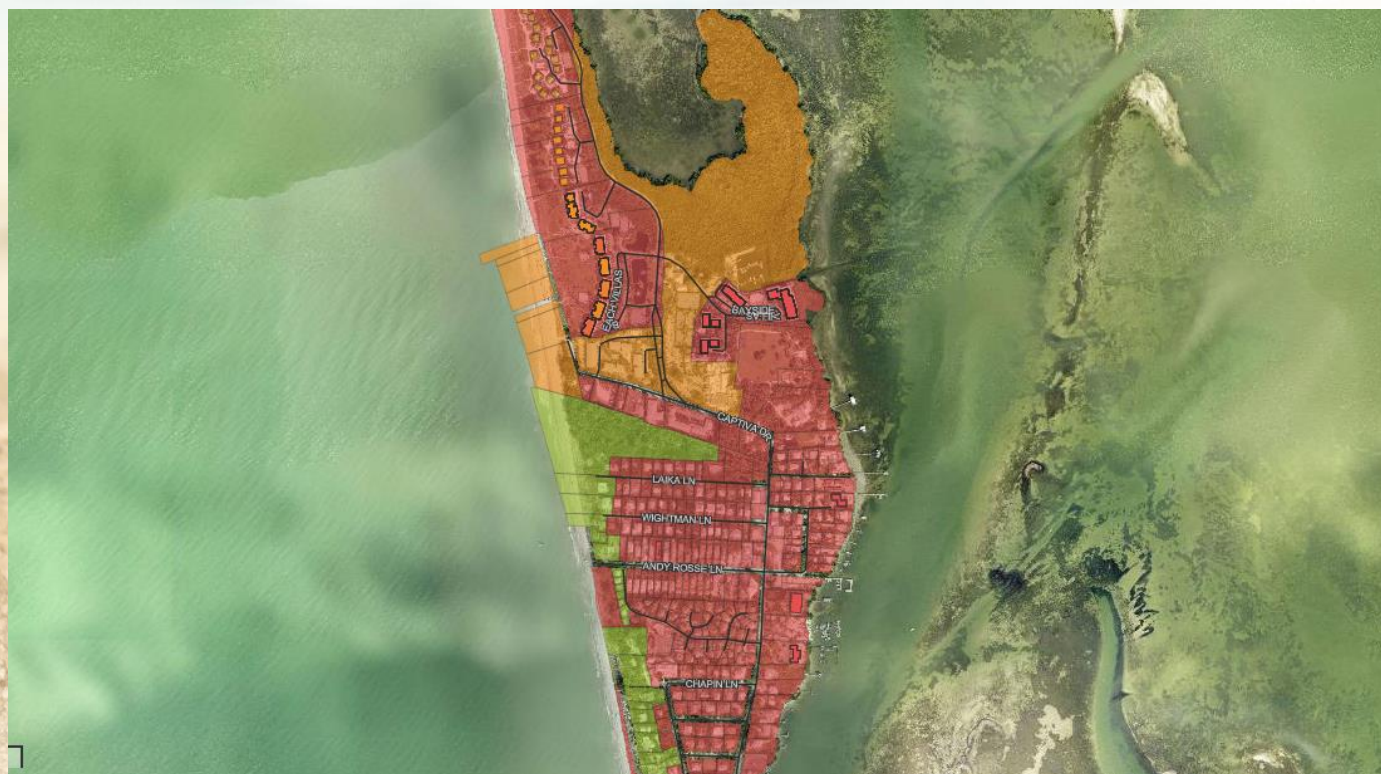
SECRETARY

**Richard Pyle**

TREASURER

**Michael Mullins**

COMMISSIONER



This aerial view is from the application posted on the website. The color-coded map overlay is used to distinguish the apportionment classifications.

Please note: Florida has a very broad public records law. Most written communications to or from CEPD Employees and officials regarding CEPD business are public records available to the public and media upon request. Your email communication may be subject to public disclosure. Under Florida law, email addresses are public records. If you do not want your email address released in response to a public records request, do not send electronic mail to this entity. Instead, contact this office by phone or in writing.